

## You (don't) be the judge.

---

☐ **The Text:** **Luke 6:37-11** (Page #1601 in the sanctuary **Bible**)

☐ **The Context:** Jesus is gaining tremendous popularity as the crowds are coming to hear his straightforward teaching about the kingdom of God. He heals many people and speaks the truth with authority. In Luke 6, Jesus presents a series of profound lessons. It is sometimes called the "sermon on the mount", because he taught in an open space on a mountainside.

### **What has been happening?**

**Luke 5:15-16** Yet the news about him spread all the more, so that crowds of people came to hear him and to be healed of their sicknesses. [16] But Jesus often withdrew to lonely places and prayed.

**Luke 6:11** But they (the Pharisees and teachers of the law) were furious and began to discuss with one another what they might do to Jesus.

## **Jesus offers good reasons to avoid "judging/condemning"**

① The \_\_\_\_\_ you use will be used to \_\_\_\_\_ you.

● **Luke 6:37-38** "Do not judge, and you will not be judged. Do not condemn, and you will not be condemned. Forgive, and you will be forgiven. [38] Give, and it will be given to you. A good measure, pressed down, shaken together and running over, will be poured into your lap. For with the measure you use, it will be measured to you."

a practical application

② It is \_\_\_\_\_ to us and to \_\_\_\_\_. We become \_\_\_\_\_ and \_\_\_\_\_.

● **6:39-40** He also told them this parable: "Can a blind man lead a blind man? Will they not both fall into a pit? [40] A student is not above his teacher, but everyone who is fully trained will be like his teacher."

prejudice = a judgment or opinion held in disregard of facts that contradict it, a preconceived idea, favorable or more usually unfavorable, suspicion, intolerance or hatred.  
**Webster New World Dictionary**

a practical application:

③ It is \_\_\_\_\_ strength \_\_\_\_\_.

● **6:41-42** "Why do you look at the speck of sawdust in your brother's eye and pay no attention to the plank in your own eye? [42] How can you say to your brother, 'Brother, let me take the speck out of your eye,' when you yourself fail to see the plank in your own eye? You hypocrite, first take the plank out of your eye, and then you will see clearly to remove the speck from your brother's eye."

**hypokrites** (Greek) = hypocrite, an actor under an assumed character, a pretender

## Familiar influences that move us toward being judgmental

① Being \_\_\_\_\_-driven instead of \_\_\_\_\_-driven

- **Proverbs 16:18** Pride goes before destruction, a haughty spirit before a fall.
- **Proverbs 18:12** Before his downfall a man's heart is proud, but humility comes before honor.
- **Proverbs 21:24** The proud and arrogant man--"Mocker" is his name; he behaves with overweening pride.

**A toxic expression of judgment/condemnation:** \_\_\_\_\_

- **Proverbs 20:19** A gossip betrays a confidence; so avoid a man who talks too much.
- **Romans 1:29** They have become filled with every kind of wickedness, evil, greed and depravity. They are full of envy, murder, strife, deceit and malice. They are gossips...

*"Maybe I shouldn't say this, but..."*

*"I'm no person to judge, but..."*

- **Ephesians 4:29** Do not let any unwholesome talk come out of your mouths, but only what is helpful for building others up according to their needs, that it may benefit those who listen.  
**4:31** Get rid of all bitterness, rage and anger, brawling and slander, along with every form of malice.

### **A Sinner's Prayer:**

Lord, I am a sinner who has offended you. Please forgive me. I believe that Jesus Christ died on the cross for my sins and place my trust in Christ's sacrifice as the only way to be right with you. Thank you for loving me and coming into my heart. I want to follow you and do your will in my life. In Jesus' name, Amen.

② Ignoring \_\_\_\_\_

- **Ephesians 4:32** Be kind and compassionate to one another, forgiving each other, just as in Christ God forgave you.
- **Romans 14:10** You, then, Why do you judge your brother? Or Why do you look down on your brother? For we will all stand before God's judgment seat.

③ Allowing ourselves to be influenced by \_\_\_\_\_.

④ Allowing ourselves to be influenced by \_\_\_\_\_.

practical applications:

**Challenge #1** "I will not get entangled in \_\_\_\_\_ and I will \_\_\_\_\_ from it as soon as I \_\_\_\_\_ it."

**Challenge #2** "I will not express any content (in \_\_\_\_\_ or \_\_\_\_\_) that speaks negatively of another person's \_\_\_\_\_."

### **Weekend Content**

**+Listen Online >>** Go to [www.bloomingdalechurch.org/weekendcontent](http://www.bloomingdalechurch.org/weekendcontent) or find the "Weekend Content" heading at the bottom of any page on our website.

**+Podcast >>** You can download our podcast to iTunes or a RSS feed reader to listen to on your personal media player. Go to [www.bloomingdalechurch.org/media](http://www.bloomingdalechurch.org/media) for the step by step way to get connected.

**Message Outlines & TAP >>** [www.bloomingdalechurch.org/weekendcontent](http://www.bloomingdalechurch.org/weekendcontent)

# TAP

**T** - key **Truths** = Summary thoughts, principles to live by, observations to remember.

**A** - practical **Application** = How should I respond? What action can I take?

**P** - my **Prayer** response = My expression to God from what I am reading/thinking.

Note: This week's selections are short and give us more time to reflect closely on the content. Ask yourself: What would I be thinking if I was standing there hearing Jesus say these things? What do I observe for the first time in reading this Scripture today (even if I have read it many times)?

Monday, Jan. 30	The Scripture: <b>Luke 6:1-11</b>
<b>T</b> <sup>KEY</sup> <b>TRUTHS</b>	
<b>A</b> <sup>PRACTICAL</sup> <b>APPLICATION</b>	
<b>P</b> <sup>MY</sup> <b>PRAYER</b> RESPONSE	

Tuesday, Jan. 31	The Scripture: <b>Luke 6:12-26</b>
<b>T</b> <sup>KEY</sup> <b>TRUTHS</b>	
<b>A</b> <sup>PRACTICAL</sup> <b>APPLICATION</b>	
<b>P</b> <sup>MY</sup> <b>PRAYER</b> RESPONSE	

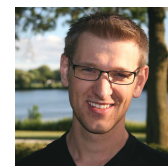
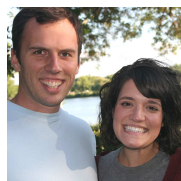
Wednesday, Feb. 1	The Scripture: <b>Luke 6:27-36</b>
<b>T</b> <sup>KEY</sup> <b>TRUTHS</b>	
<b>A</b> <sup>PRACTICAL</sup> <b>APPLICATION</b>	
<b>P</b> <sup>MY</sup> <b>PRAYER</b> RESPONSE	

Thursday, Feb. 2	The Scripture: <b>Luke 6:37-42</b>
<b>T</b> <sup>KEY</sup> <b>TRUTHS</b>	
<b>A</b> <sup>PRACTICAL</sup> <b>APPLICATION</b>	
<b>P</b> <sup>MY</sup> <b>PRAYER</b> RESPONSE	

Friday, Feb. 3	The Scripture: <b>Luke 6:43-49</b>
<b>T</b> <sup>KEY</sup> <b>TRUTHS</b>	
<b>A</b> <sup>PRACTICAL</sup> <b>APPLICATION</b>	
<b>P</b> <sup>MY</sup> <b>PRAYER</b> RESPONSE	

# Our Pastoral Staff Ethics Statement

1. We pursue a growing devotion to Christ, serving Him without compromise.
2. We strive for excellence in our daily work for the sake of Christ's kingdom.
3. We live honest, accountable lives.
4. We seek balance in our physical, social, emotional & spiritual lives, as well as our family relationships.
5. We demonstrate a God-honoring submission to constituted authority.
6. We place the best interests of our congregation before our own career interests.
7. We address conflict according to the principles of Matthew 5:23-24 & 18:15-19.
8. We support our co-workers, Shepherds Team, Governing Board and subordinates publicly and privately. We are loyal to others who are not present in what we say and what we permit others to say to us.
9. We are gracious in the shortcomings of our co-workers and our congregation, demonstrating a humble, teachable spirit.



Dan & Katie Bailey, Bill & Nancy Calvin, Jen Hampshire, Dan & Amber Marcello

Matt & Christine Massie, Daniel & Amy Riemenschneider, David & Marina Riemenschneider, Paul Thompson